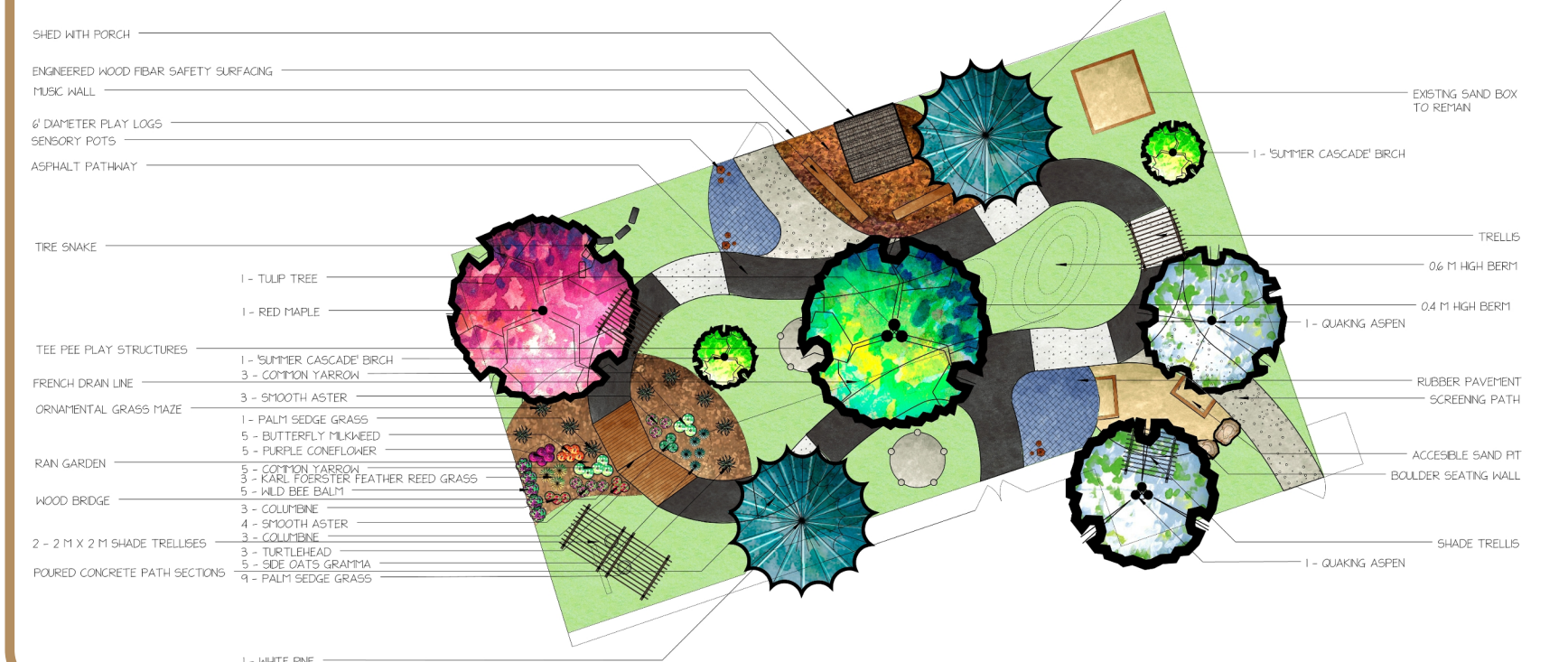
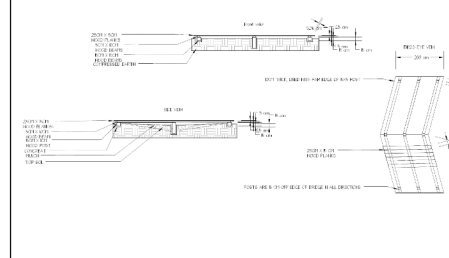


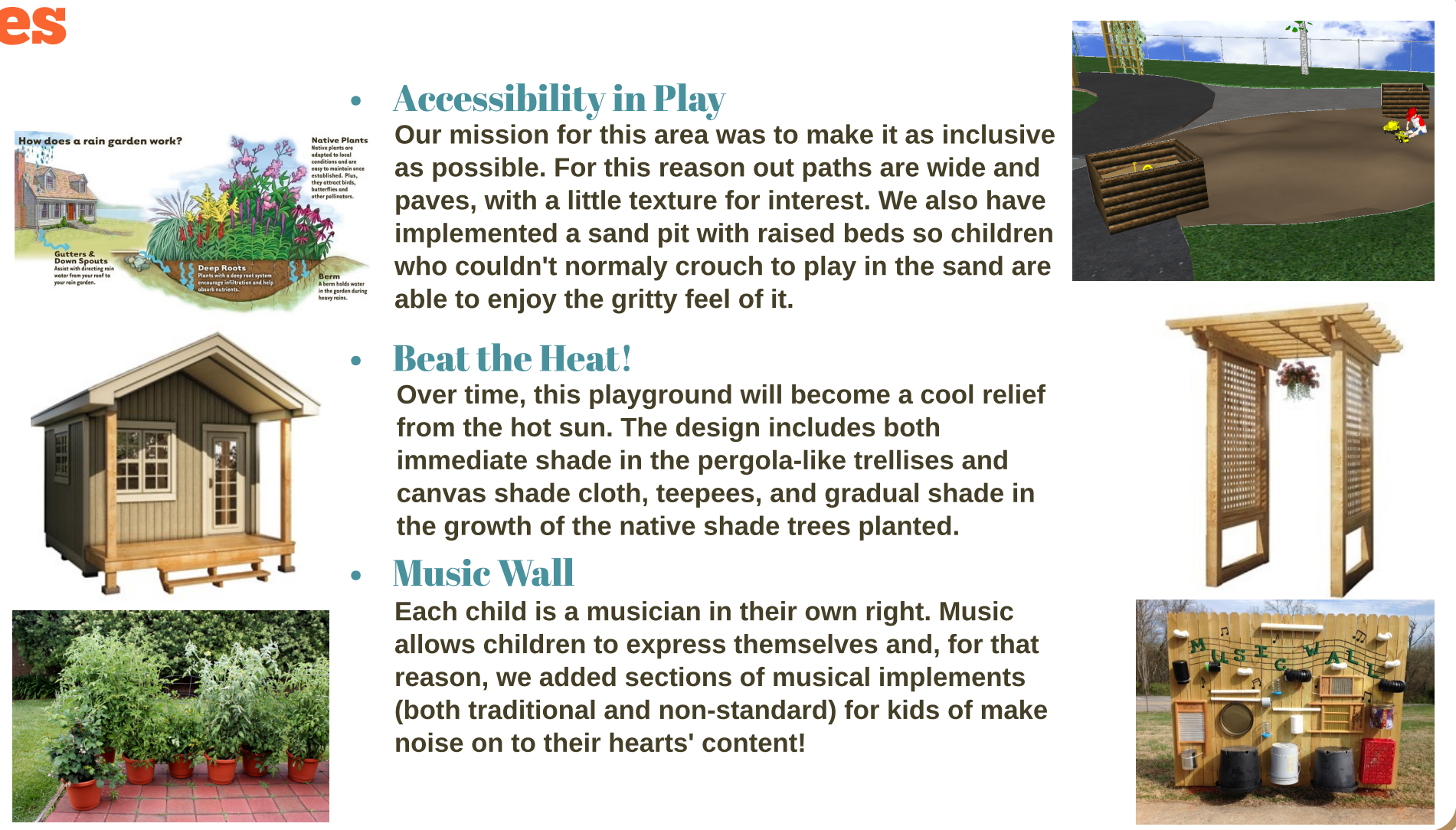
First Adventure Playground

Wood Bridge Detail



First Adventure Features

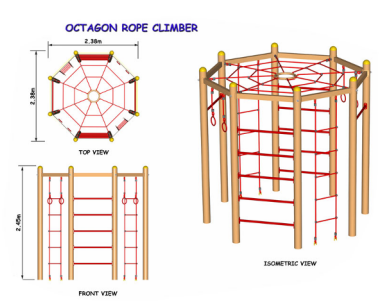
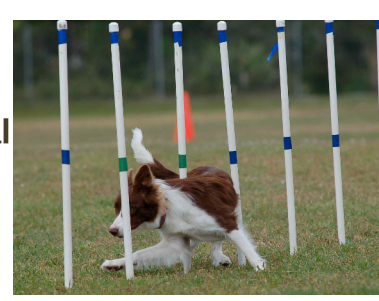
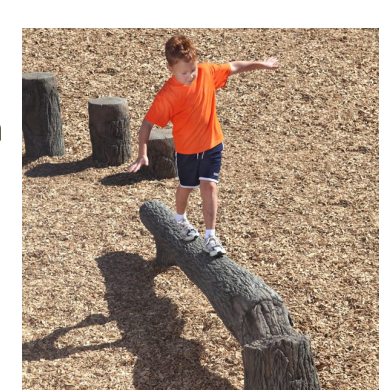
- Rain Water Management**
In our First Adventure Playground, we took the directive to manage rainwater and create a habitat for wildlife and ran with it. We propose to install a prefabricated French Drain System which opens out into the Rain Garden where it waters and is filtered by the roots of the plants. This creates an opportunity for children to explore the bugs and plants in this ecosystem.
- Play Shed**
This Play Shed is perfect for storage and play! It has a built in porch for children to clamber on and a roomy storage area that can be locked for safety behind!
- Sensory Garden**
The senses will delight as you touch these fragrant herbs and taste the vegetables. Aimed at children with visual impairment, these sensory pots allow them to learn to recognize plants by touch and taste.



- Accessibility in Play**
Our mission for this area was to make it as inclusive as possible. For this reason our paths are wide and paves, with a little texture for interest. We also have implemented a sand pit with raised beds so children who couldn't normally crouch to play in the sand are able to enjoy the gritty feel of it.
- Beat the Heat!**
Over time, this playground will become a cool relief from the hot sun. The design includes both immediate shade in the pergola-like trellises and canvas shade cloth, teepees, and gradual shade in the growth of the native shade trees planted.
- Music Wall**
Each child is a musician in their own right. Music allows children to express themselves and, for that reason, we added sections of musical implements (both traditional and non-standard) for kids of make noise on to their hearts' content!

George Vanier Features

- Shade**
When conversing with the teachers, school board, and students, one commonality was found. The school yard NEEDS shade. In order to bring that to the school, we carefully selected native, fast growing shade trees. These trees as detailed below are all strong landscape trees with different bark patterns and leaf shapes for children to study and learn.
- Compass and Garden**
Another issue that was brought forth by parents and teacher alike was the difficulty in traveling to the back area of the Primary Yard for fire drills. To address this we created the Compass with fully accessible paths leading from both the First Adventure Playground and the Tarmac to it. The Compass is a paved circle with boulders placed at the four points of the compass, teaching children how to orient themselves in relation to the cardinal directions. The Compass is surrounded by a native pollinator garden to create a habitat for birds and butterflies.
- Natural Playspace**
One of the most important lessons for a kid to learn is how to play with nature surrounding them. With this thought in mind, we designed a natural playspace with trees to shade it and various elements within. There are natural logs for children to learn to balance themselves on and tired embedded in the safety surfacing for them to clamber on.
- Outdoor Gym and Sports Fields**
If there is one thing we learned talking with the students of George Vanier it is that they love to run around and play sports. Along the side we propose to outline three sports fields with White Pine Trees as goal posts and screening on the North Side. We also created an area where students can test their balance and agility by walking across balance beams, weaving through upright logs, and taking on the tire challenge.
- Spider Web Rope Structure**
This elevated Spider Web is the perfect area for children of all ages to gather together. Whether it's sitting at the top or hanging on the sides, this structure will be the spot for the students. Best of all is the Limestone Screenings path that wraps around it, bringing accessibility to the quite zone.



Outdoor Classroom



George Vanier Features

- Outdoor Classroom**
One of the main features of this design is the Outdoor Classroom as seen above. When talking to the educators of George Vanier Catholic School, the need for an area like this was emphasized. This outdoor space of learning is fully accessible to all who wish to learn. The pathway that leads to it is two meters wide - the standard width for wheelchair accessibility. This classroom extends off the pre-existing pavilion with a firm asphalt surface and a circular paved area with boulder seating all round.
- Phase 1**
In the first phase we propose to build the outdoor classroom in its entirety and do preliminary work for the Compass as well as the accessible paths leading to them. We also propose to plant seven of the screening trees to protect the students from wind and prying eyes.
- Phase 2**
The second phase is a continuation of the first in which the Compass and the surrounding pollinator garden will be completed. In addition to this, several trees will be planted in the school yard for shade.
- Next Phases**
The phases that follow can be implemented in no particular order as they are not dependant upon one another for completion. They include building the outdoor gym, the track, the natural playspace, and the web structure. Each Phase includes adding shade trees to the yard to stagger the growth. As best as possible, each phase was kept from around \$35,000 to \$40,000 to increase the speed of phase implementation.

